

SPRINGLOADED BACKPRESSURE REGULATOR BS(H)8

GASES • WATER • ACIDS • OIL



MAIN FEATURES

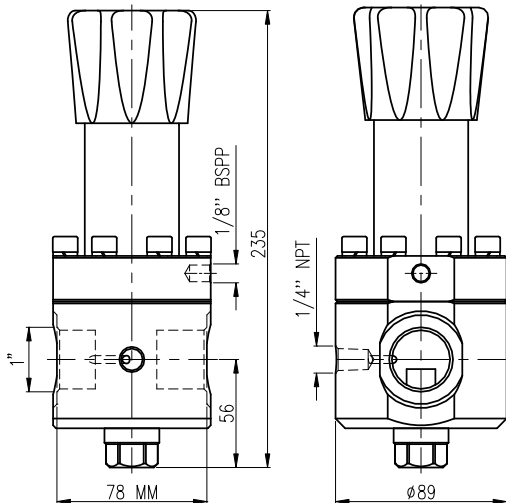
- ss 316L
- diaphragm (0-14 bar) or piston sensing (0-360 bar)
- 9 set pressure ranges
- bubble tight shut-off
- choice of o-ring materials
- shell design according to EN 12516

CHARACTERISTICS

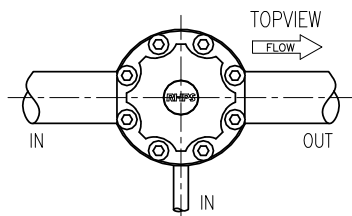
Max. pressure	: 70 bar, 400 bar
Set pressure range	: 0 – 360 bar
Seat diameter:	: 5 mm : range 80-360 bar
	: 10 mm : range 0-80 bar
Cv (Kv):	: 5 mm : 0.49 (0.42)
	: 10 mm : 1.95 (1.66)

Materials:

• Body & Trim	: ss 316L
• Springhousing	: ss 316L
• Seat	: pctfe, peek
• Seals & Diaphragm	: elastomer
Connections	: 1" bspp, npt flanges to DIN/ANSI B16.5
Gauge port	: 1/4" npt
Weight	: 4,5 kg (without flanges)
Temperature range	: -20 to + 80°C *



PORTING STYLE



CLEANING

This regulator is ultrasonically cleaned and degreased. Cleaning based on ASTM-G93 Level C / CGA 4.1 is optional.

Do not use teflon tape or anaerobic sealing compounds on the bspp threads.

This is not a safety valve!

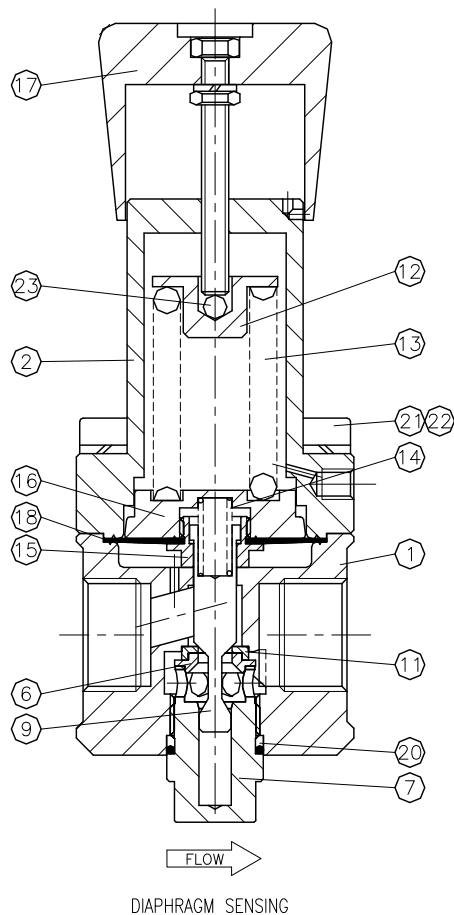
* Actual range depends on choice of seat and seal material.

⚠ Swagelok regulators are not “Safety Accessories” as defined in the Pressure Equipment Directive 97/23/EC:

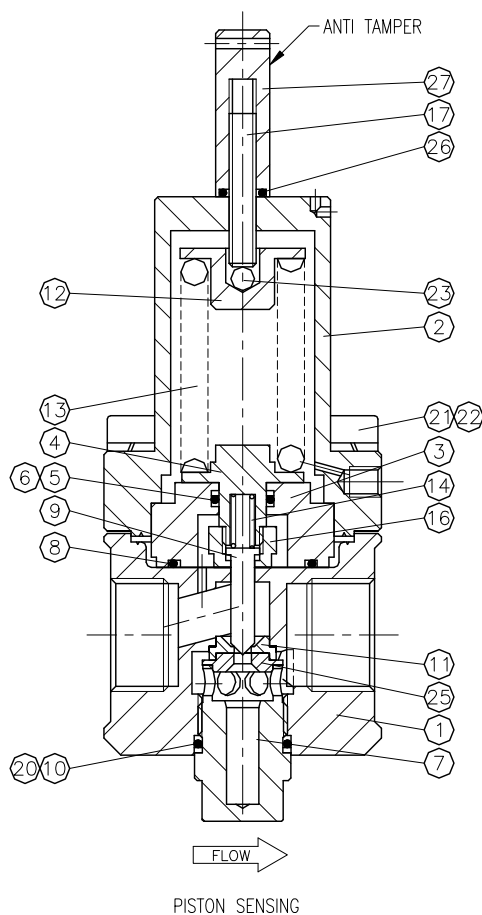
⚠ Do not use the regulator as a shut off device.

RHPS Series

Swagelok



DIAPHRAGM SENSING



PISTON SENSING

GAUGEPORT(S)
standard:



options:



GN2
(not in combination with flanges)



GN1



GN5
(not in combination with flanges)

ORDERING INFORMATION

example: **BSHB8-02-5-NNK-A**

BSH	B8	- 02	- 5	- N	N	K	- A	
series / inlet	connection	flange facing*	material	set pressure range	o-rings	diaphragm	seat	options
BS = 70 bar BSH = 400 bar	B8 = 1" bspp N8 = 1" npt ansi flanges FA8A = 1" Class 150 FA8B = 1" Class 300 FA8C = 1" Class 600 FA8E = 1" Class 1500 FA8F = 1" Class 2500 din flanges FD8M = DN25 PN16 FD8N = DN25 PN40 FD8P = DN25 PN64 FD8R = DN25 PN250 FD8S = DN25 PN400	*if flanges are ordered 1 = raised face smooth 3 = RTJ	02 = ss316L	BS: diaphragm sensing: 1 = 0 - 3 bar 2 = 0 - 7 bar 3 = 0 - 14 bar 4 = 0 - 28 bar piston sensing: 5 = 0 - 40 bar BSH: diaphragm sensing: 1 = 0 - 3 bar 2 = 0 - 7 bar 3 = 0 - 14 bar 4 = 0 - 28 bar piston sensing: 5 = 0 - 40 bar 6 = 0 - 80 bar 7 = 0 - 150 bar 9 = 0 - 280 bar 11 = 0 - 360 bar	N = nitrile E = epdm V = viton	N = nitrile E = epdm V = viton Piston o-rings N = nitrile E = epdm V = viton	K = pctfe P = peek	A = anti-tamper G* = gauge port *see gauge port options

Red text identifies an example ordering number

Safe Product Selection
When selecting a product, the total system design must be considered to ensure safe, trouble-free performance. Function, material compatibility, adequate ratings, proper installation, operation, and maintenance are the responsibilities of the system designer and user.

RHPS, Swagelok—TM Swagelok Company
© 2010 Swagelok Company
Printed in U.S.A., OM
June 2010, R0
MS-02-408-E