

1½" PILOT-OPERATED PRESSURE REGULATOR RD(H)15

2- PATH CONTROL



MAIN FEATURES

- ss 316L
- balanced valve
- integral pilot regulator
- 2- path control
- diaphragm sensing
- Cv 7.3
- bubble tight shut off
- large dome for improved stability
- shell design according to EN 12516

CHARACTERISTICS

Inlet pressure : 70 bar, 400 bar
 Outlet ranges : 0 – 70 bar, 0 – 250 bar
 Ratio dome / outlet pressure : 1:1
 Seat diameter : 19 mm
 Cv (Kv) : 7.3 (6.3)

Materials:

- Body, Dome, Trim : ss 316L
 - Seat insert : RD15: elastomer
RDH15: pctfe, peek
 - Seals, Diaphragm : elastomer
- Dependency : 0,3% of inlet pressure drop
 Connections : 1½" bspp, npt
 • Line : 1½" bspp, npt
flanges to DIN / ANSI B16.5
 • Dome : 2x ¼" bspp
 • Gauge-, Pilotports : 2x ¼" bspp, npt
 Weight : 9 kg (without flanges)
 Temperature range : -20°C to +80°C*

IMPROVED PERFORMANCE

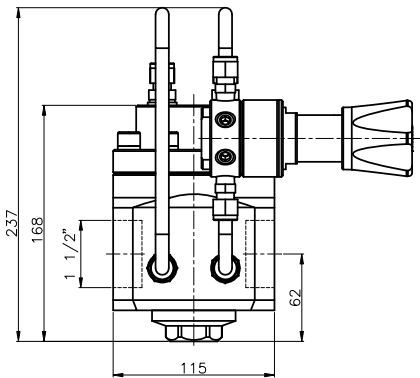
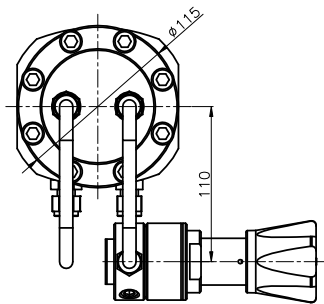
- an [external feedback](#) (when P2 ≤ 20 bar)

CLEANING

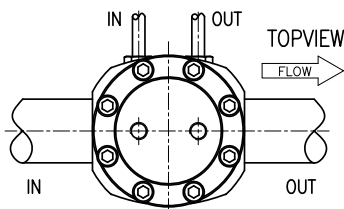
This regulator is ultrasonically cleaned and degreased. Cleaning based on ASTM-G93 Level C / CGA 4.1 is optional.

Do not use teflon tape or anaerobic sealing compounds on the bspp threads.

* Actual range depends on choice of seat and seal material.



PORTING STYLE

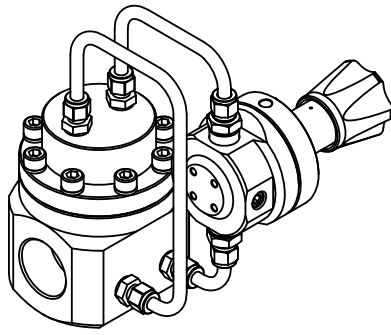


⚠ Swagelok regulators are not “Safety Accessories” as defined in the Pressure Equipment Directive 97/23/EC:

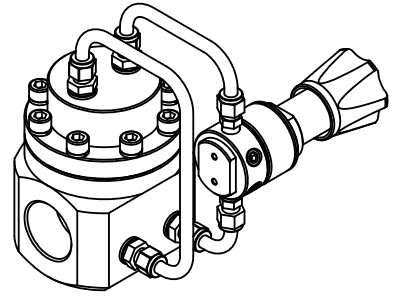
⚠ Do not use the regulator as a shut off device.

RHPS Series

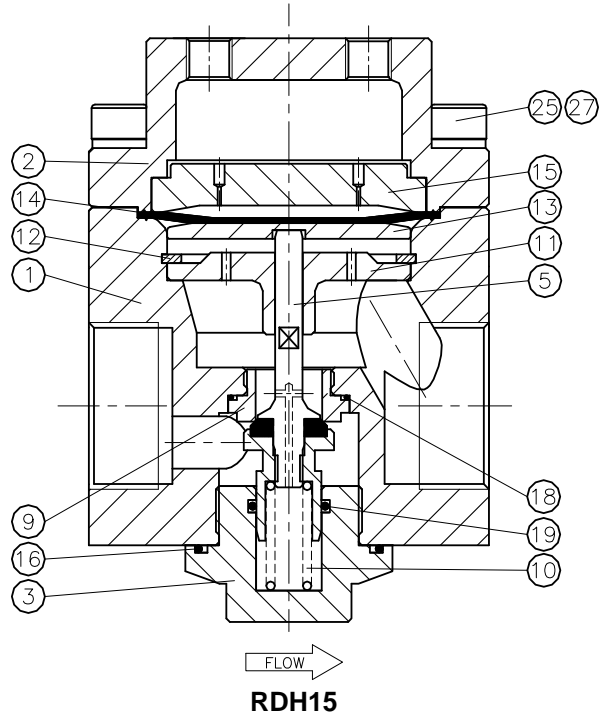
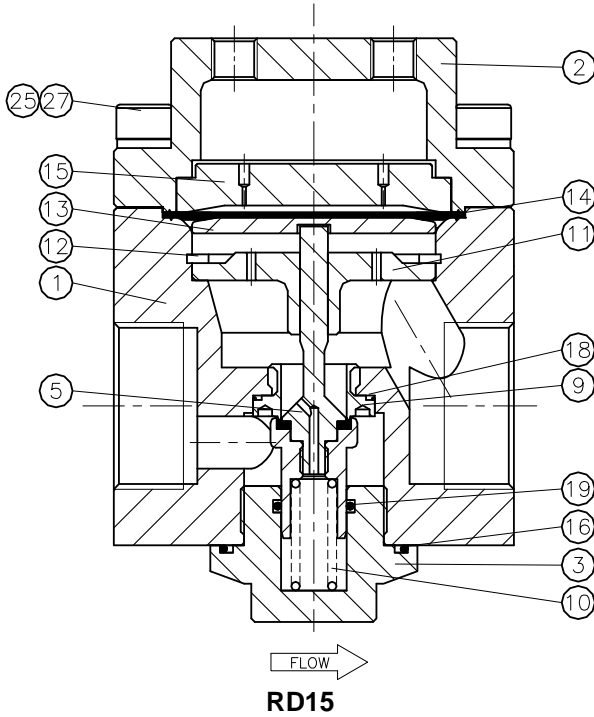
Swagelok®



RD15 with LRS4



RDH15 with RS2



GAUGEPORTS

If gauges are required use gauge port(s) of pilot regulator.

ORDERING INFORMATION

example: RDHB15-02-4-NNK-EF

RDH	B15	- 02	- 4	- N	N	K	- EF	
series / inlet	connection	flange facing*	material	outlet range	o-ring	diaphragm	seat	options
RD = 70 bar RDH = 400 bar	B15 = 1½" bspp N15 = 1½" npt ansi flanges FA15A = 1½" Class 150 FA15B = 1½" Class 300 FA15C = 1½" Class 600 FA15E = 1½" Class 1500 FA15F = 1½" Class 2500 din flanges FD15M = DN40 PN16 FD15N = DN40 PN40 FD15P = DN40 PN64 FD15R = DN40 PN250 FD15S = DN40 PN400	*if flanges are ordered 1 = raised face smooth 3 = RTJ	02 = ss316L	RD: 0 = 0 - 3 bar 1 = 0 - 9 bar 2 = 0 - 20 bar 3 = 0 - 70 bar RDH: 4 = 0 - 10 bar 5 = 0 - 25 bar 6 = 0 - 100 bar 7 = 0 - 175 bar 8 = 0 - 250 bar	N = nitrile E = epdm V = viton	N = nitrile E = epdm V = viton	RD: N = nitrile E = epdm V = viton RDH: K = pctfe P = peek	EF = external feedback

Red text identifies an example ordering number.

Safe Product Selection

When selecting a product, the total system design must be considered to ensure safe, trouble-free performance. Function, material compatibility, adequate ratings, proper installation, operation, and maintenance are the responsibilities of the system designer and user.

RHPS, Swagelok—TM Swagelok Company
© 2010 Swagelok Company
Printed in U.S.A., OM
June 2010, R0
MS-02-396-E